



Chichester Road, Tonbridge, Kent, TN9 2TL

Guide Price £575,000 - £600,000

When experience counts...

est. 1828
bracketts

Offered for sale is this charming, good-sized, four-bedroom Victorian terrace property situated in the sought after Meadow Lawn in central Tonbridge. Arranged over three floors, and retaining many period features including stripped wooden floor boards and feature fireplaces, the property comprises an entrance hall, open plan living / dining room a modern open plan bespoke kitchen with bi-folding doors to the rear garden and cloakroom WC, exposed feature structural beams / brickwork and herringbone flooring. On the first floor are two bedrooms and a sizeable family bathroom with separate shower cubicle, loft conversion on the second floor adding a further two bedrooms, WC with basin. Outside is a walled, front garden and entrance porch, and an, established garden to the rear. Situated close to the town centre, with all its shops and amenities, and Tonbridge Castle, it is also within the catchment area for coveted local primary schools Sussex Road and close proximity to Tonbridge Park and Haysden Country Park beyond. It is located in a safe and quiet cul-de-sac. It is an ideal property for anyone looking to be centrally located, especially for commuters.

Four Bedrooms

Period Terraced Family Home

Extended To Rear / Arranged Over Three Floors

Newly Fitted Kitchen

Cloakroom WC

Sitting Room & Dining Room

Period Features, Fire Place & Bay Windows

Sought After Meadow Lawn - South Tonbridge location

Close to Coveted Schools, Mainline Station & High Street

Viewing Highly Recommended





LOCATION: Tonbridge

Tonbridge is a thriving market town that has developed over the centuries. It boasts a fine example of a 'Motte and Bailey' Norman castle built in the 13th century, set on the banks of the river Medway with the castle grounds abutting Tonbridge Park offering covered/open air swimming pool, tennis courts, childrens' play areas, miniature railway, putting etc.

Tonbridge town offers an excellent range of retail and leisure activities with many High Street stores, together with a selection of coffee shops, restaurants and local inns.

The mainline station provides fast commuter links into London (Cannon Street/London Bridge/Charing Cross in approximately 40 minutes) with road links to the M20 & M25 motorways via the nearby A26 and A21.

Tonbridge offers first-rate primary and secondary schools (including Grammars and Public Schools) many of which consistently do well in the league tables. There are many places of historical interest in the surrounding areas including Penshurst Place and Gardens, Hever Castle, Knole House and Chartwell (once home to Winston Churchill).

ADDITIONAL INFORMATION:

Council Tax Band C
Double Glazed Windows

Score	Energy rating	Current	Potential
92+	A		
81-91	B		83 B
69-80	C		
55-68	D	68 D	
39-54	E		
21-38	F		
1-20	G		

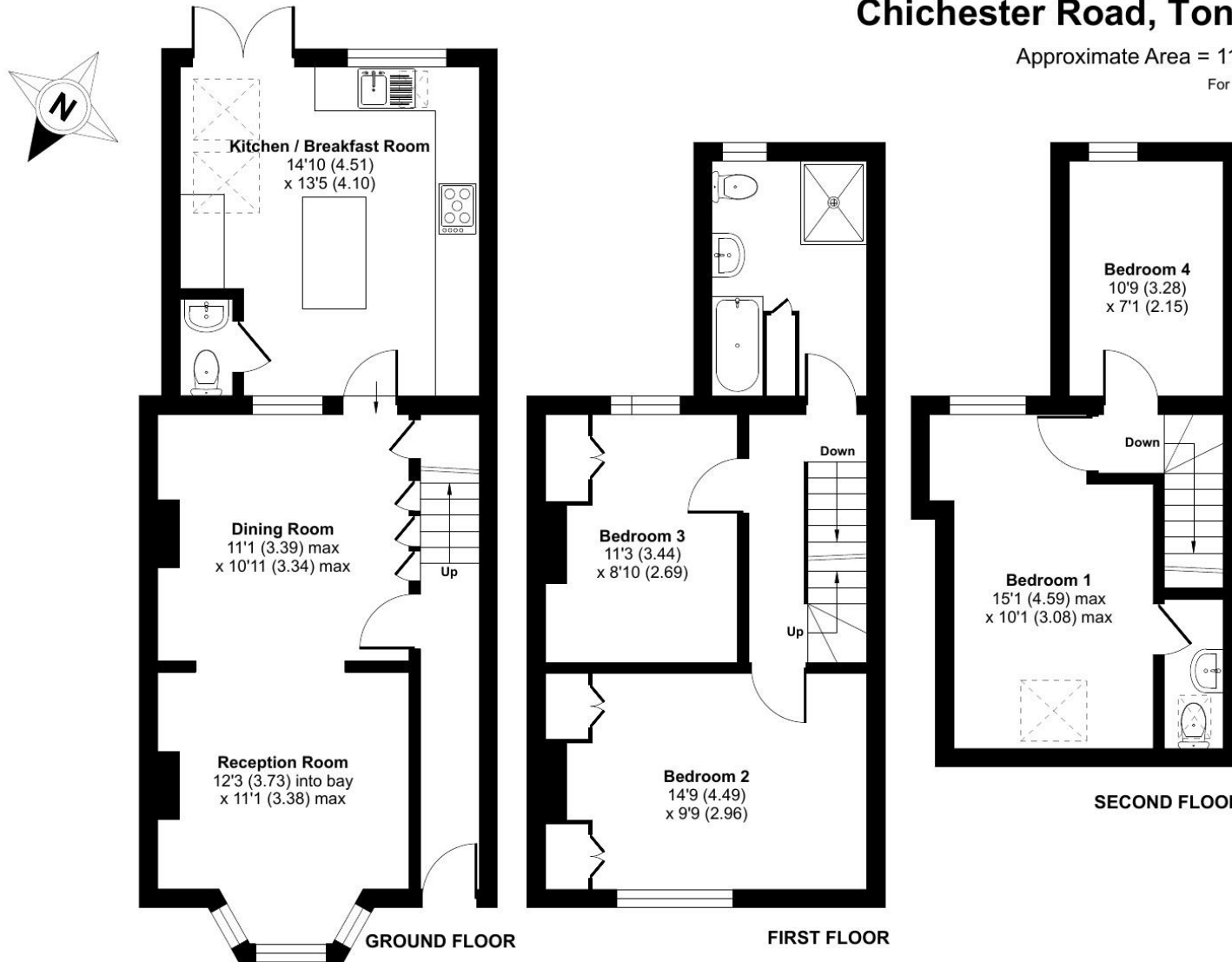


Important Notice: Bracketts, their clients and any joint agents give notice that they have no authority to make or give any representations or warranties in relation to the property. These particulars do not form part of any offer or contract and must not be relied upon as statements or representations of fact. The text, photographs and plans are for guidance only and are not necessarily comprehensive. All areas, measurements or distances are approximate and no responsibility is taken for any error, omission or mis-statement. It should not be assumed that the property has necessary planning, building regulation or other consents and Bracketts have not tested any services, appliances, equipment or facilities. Purchasers must satisfy themselves by inspection or otherwise. Prices, rents or any other charges are exclusive of VAT unless stated to the contrary.

Chichester Road, Tonbridge, TN9

Approximate Area = 1187 sq ft / 110.2 sq m

For identification only - Not to scale



Floor plan produced in accordance with RICS Property Measurement 2nd Edition, incorporating International Property Measurement Standards (IPMS2 Residential). © nichecom 2025. Produced for Bracketts llp. REF: 1248288